



*jordan fishwick*

**WEST DIDSBURY**  
Quantum House



## Quantum House, West Didsbury, M20 2NE

Offers Over £280,000

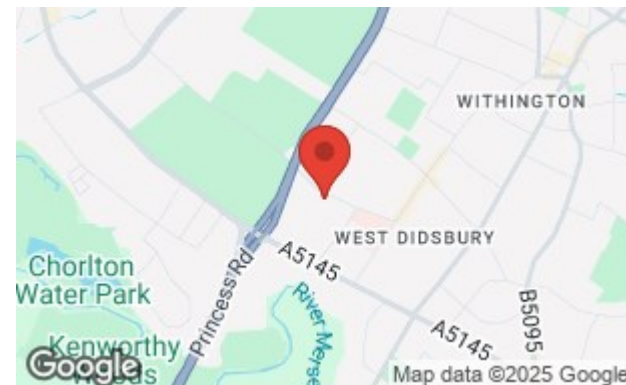


### The Property

A stylishly presented one-bedroom apartment on the second floor of the coveted Quantum House development on Kensal Drive, West Didsbury, created by PJ Livesey. Nestled in meticulously landscaped grounds, this stylish living space features an inviting entrance hallway with walk-in storage cupboard. The property enjoys a large open plan living, dining, and kitchen area equipped with premium Neff appliances:- Microwave, washer/dryer, dishwasher, fridge/freezer & wine cooler, complemented by granite countertops. Floor to ceiling, sliding patio doors with fitted electric blinds, lead to a generous private balcony extending over 12sq ft. The spacious bedroom boasts fitted wardrobes, while the modern bathroom showcases sleek chrome fixtures and a rainfall shower. Additional amenities include an expansive communal lounge, secure gated parking and lift access to all floors. Conveniently located in West Didsbury, this apartment is within walking distance to local amenities and the Metrolink Station. No chain.

### Directions

M20 2NE



- A second floor apartment
- Spacious open plan living area
- Fully fitted kitchen with Neff appliances
- Secure gated allocated parking
- Luxury bathroom suite
- Walking distance to Burton Road & Metro Station
- Large private balcony
- Floor to ceiling patio doors
- Lift access to all floors

**Postcode** - M20 2NE

**EPC Rating** - B

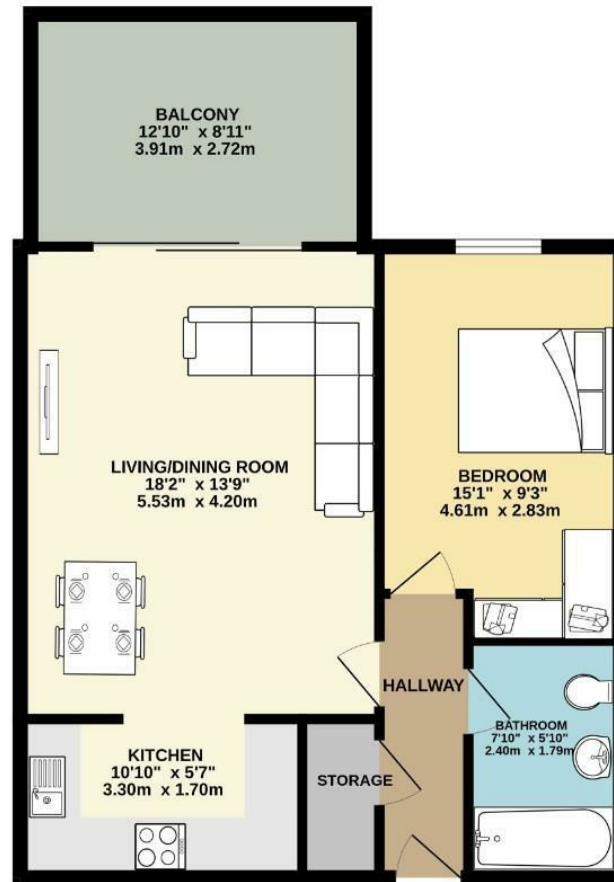
**Floor Area** - 673.00 sq ft

**Local Authority** - Manchester City Council

**Council Tax** - C



SECOND FLOOR  
673 sq.ft. (62.6 sq.m.) approx.



TOTAL FLOOR AREA : 673 sq.ft. (62.6 sq.m.) approx.  
Measurements are approximate. Not to scale. Illustrative purposes only.  
Made with Metropix ©2025



These particulars are believed to be accurate but they are not guaranteed and do not form a contract. Neither Jordan Fishwick nor the vendor or lessor accept any responsibility in respect of these particulars, which are not intended to be statements or representations of fact and any intending purchaser or lessee must satisfy himself by inspection or otherwise as to the correctness of each of the statements contained in these particulars. Any floorplans on this brochure are for illustrative purposes only and are not necessarily to scale.

Offices also at: Wilmslow, Macclesfield, Hale, Sale, Chorlton, Glossop, Manchester & Salford

757-759 Wilmslow Road, Didsbury Village, Manchester

0161 445 4480

didsbury@jordanfishwick.co.uk  
www.jordanfishwick.co.uk